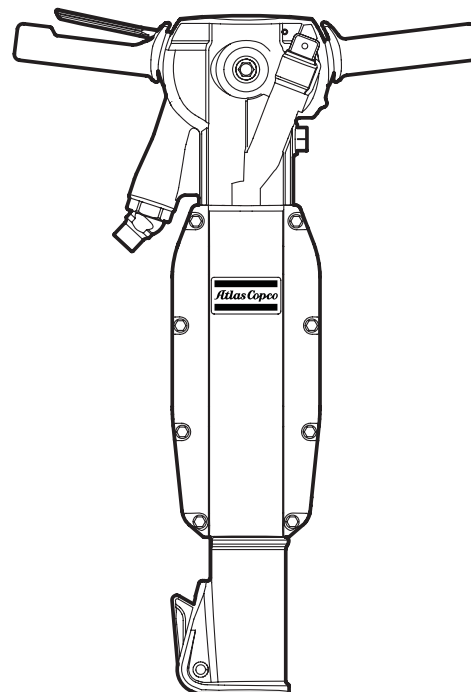


## Spare parts list

### Pneumatic breaker

Model	Valid from serial No.
TEX 270PS 28x160	KAL000428
TEX 270PS 32x160	KAL000428
TEX 280PE 28x160	KAL000419
TEX 280PE 32x160	KAL000419

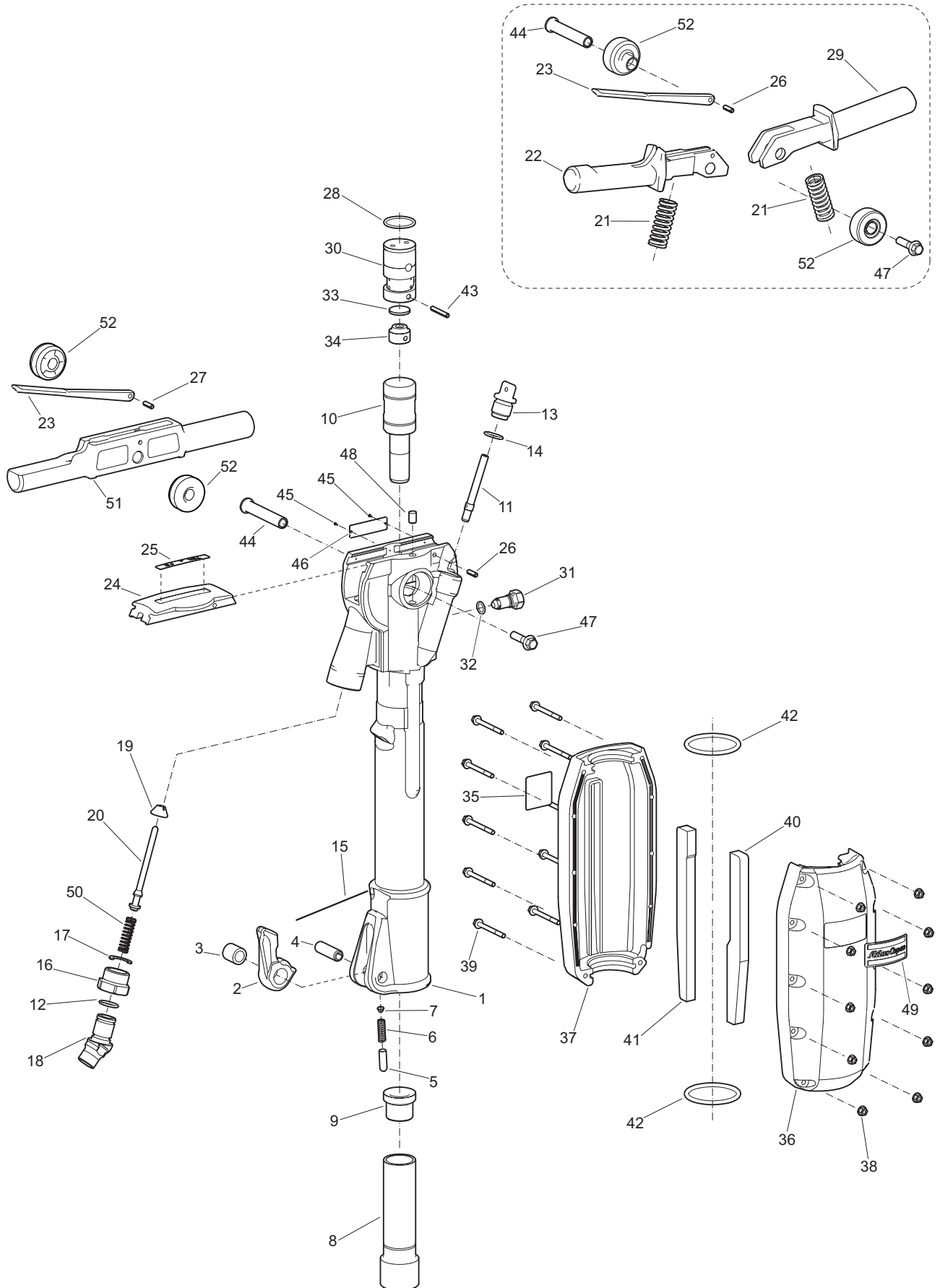




# Contents

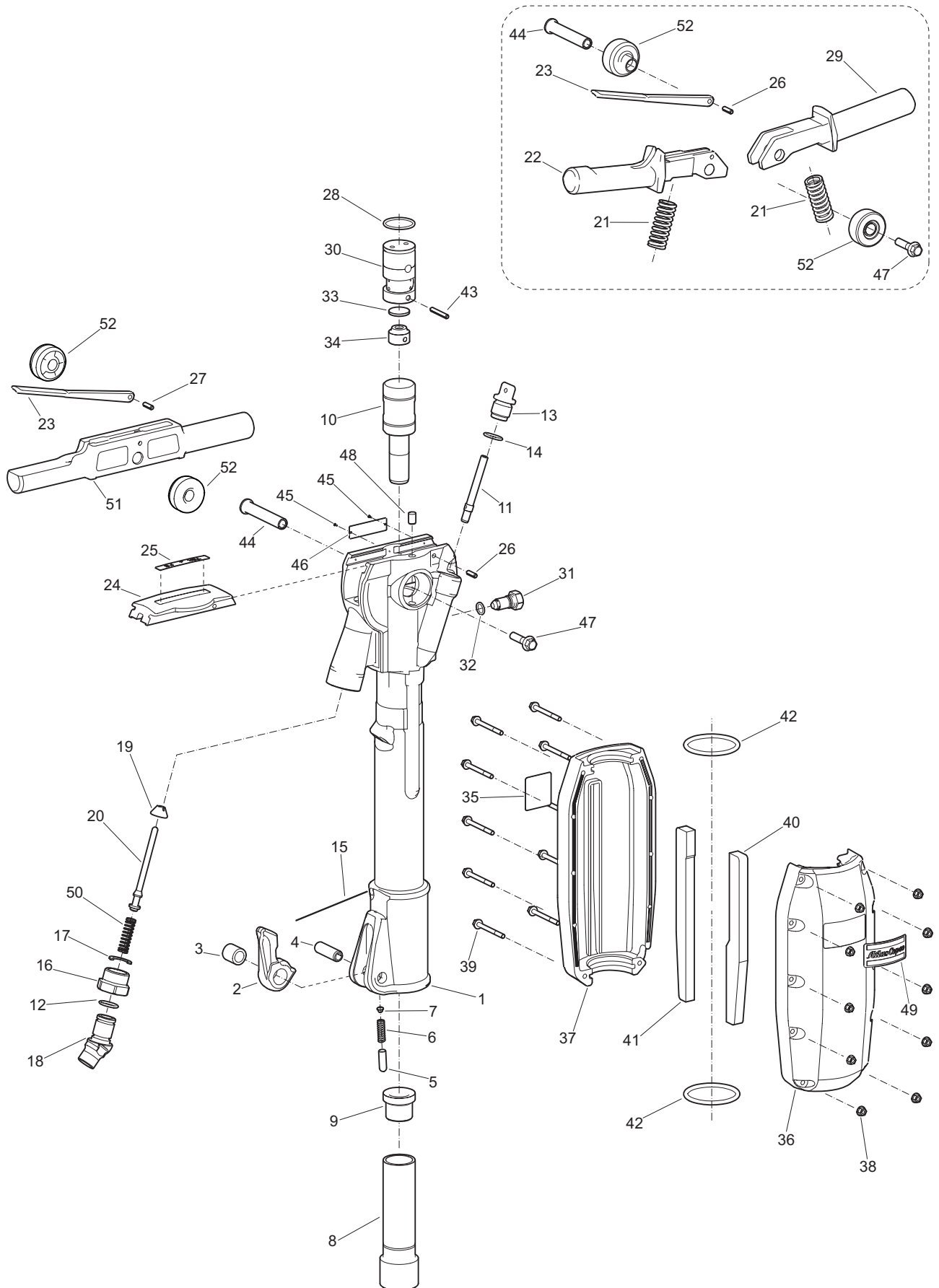
Spare parts list .....	4
Working tools, ISO standard .....	8
Working tools, US standard .....	9
Claw couplings .....	10
Air oil .....	10
Shank gauge .....	10

# Spare parts list



No.	Description	Quantity				Ordering No.
		270PS 28x160	270PS 32x160	280PE 28x160	280PE 32x160	
1	Cylinder	1	1	1	1	3310 1528 00
<b>(2-3)</b>	<b>Tool retainer</b>	1	1	1	1	3310 0890 80
2	Tool retainer	1	1	1	1	— *)
3	Bushing	1	1	1	1	3310 0891 00
4	Spring pin	1	1	1	1	0108 1691 05
5	Plunger	1	1	1	1	3310 0893 00
6	Spring	1	1	1	1	3310 0894 00
7	Protection plug	1	1	1	1	3310 1508 00
8	Tool chuck	1	-	1	-	3310 1484 00
8	Tool chuck	-	1	-	1	3310 1483 00
9	Intermediate part	1	1	1	1	3310 1548 00
10	Piston	1	1	1	1	3310 1547 00
11	Dosing feeder	1	1	1	1	3310 1260 00
12	O-ring	1	1	1	1	0663 2126 00
<b>(13-14)</b>	<b>Oil plug kit</b>	1	1	1	1	3310 1462 80
13	Oil plug	1	1	1	1	— *)
14	O-ring	1	1	1	1	0663 2126 00
15	Lock wire	1	1	1	1	3310 1534 00
16	Swivel nut	1	1	1	1	3310 1044 00
17	Lock washer	1	1	1	1	3310 1059 00
18	Swivel ¾"	1	1	1	1	3310 1536 00
19	Inlet valve	1	1	1	1	3310 1211 00
20	Valve stem	1	1	1	1	3310 1492 00
21	Spring	-	-	2	2	3310 1083 00
22	Handle	-	-	1	1	3310 1458 80
23	Trigger	1	1	1	1	3310 1460 80
24	Cover	1	1	1	1	3310 1478 00
25	Label	1	1	-	-	3310 1516 10
25	Label	-	-	1	1	3310 1516 11
26	Spring pin	1	1	2	2	0108 1324 00
27	Pin	1	1	-	-	0102 0320 00
28	O-ring	1	1	1	1	0663 2134 00

\*) Not delivered separately

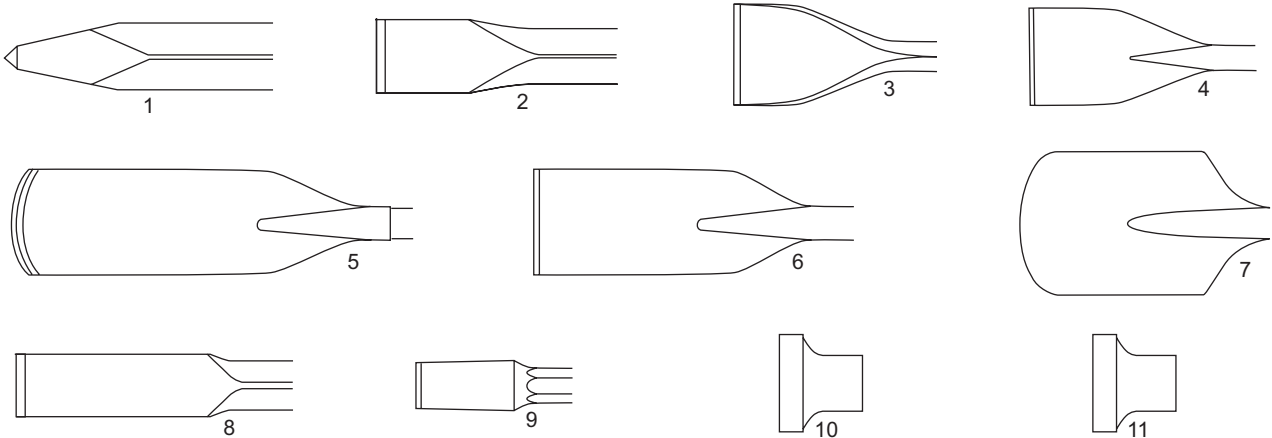


No.	Description	Quantity				Ordering No.
		270PS 28x160	270PS 32x160	280PE 28x160	280PE 32x160	
29	Handle	-	-	1	1	3310 1459 80
30	Valve housing	1	1	1	1	3310 1481 00
<b>(31–32)</b>	<b>Screw kit</b>	1	1	1	1	3310 1476 80
31	Screw	1	1	1	1	— *)
32	O-ring	1	1	1	1	0663 2120 00
33	Main valve	1	1	1	1	3310 1173 00
34	Valve cover	1	1	1	1	3310 1245 00
35	Sound label	1	1	1	1	— *)
<b>(36–42)</b>	<b>Silencer kit</b>	1	1	1	1	3310 1477 80
<b>(36–37)</b>	<b>Silencer</b>	1	1	1	1	3310 1477 00
36	Silencer front	1	1	1	1	— *)
37	Silencer rear	1	1	1	1	— *)
38	Flange nut	10	10	10	10	9232 0207 50
39	Flange screw	10	10	10	10	0147 1976 06
40	Separation wall	1	1	1	1	3310 1518 50
41	Separation wall	1	1	1	1	3310 1518 51
42	O-ring	2	2	2	2	0663 2114 14
43	Spring pin	1	1	1	1	0108 1332 00
44	Guide shaft	1	1	1	1	3310 1479 00
45	Screw	2	2	2	2	0244 4144 00
46	Data plate	1	1	-	-	— *)
46	Data plate	-	-	1	1	— *)
47	Flange screw	1	1	1	1	0147 3000 18
48	Plug	1	1	1	1	3310 1090 00
49	Label	1	1	1	1	0690 1356 00
50	Spring	1	1	1	1	3310 1537 00
51	Handle	1	1	-	-	3310 1510 00
52	Buffer	2	2	-	-	3310 1517 00
52	Buffer	-	-	2	2	3310 1461 00

\*) Not delivered separately

## Working tools, ISO standard

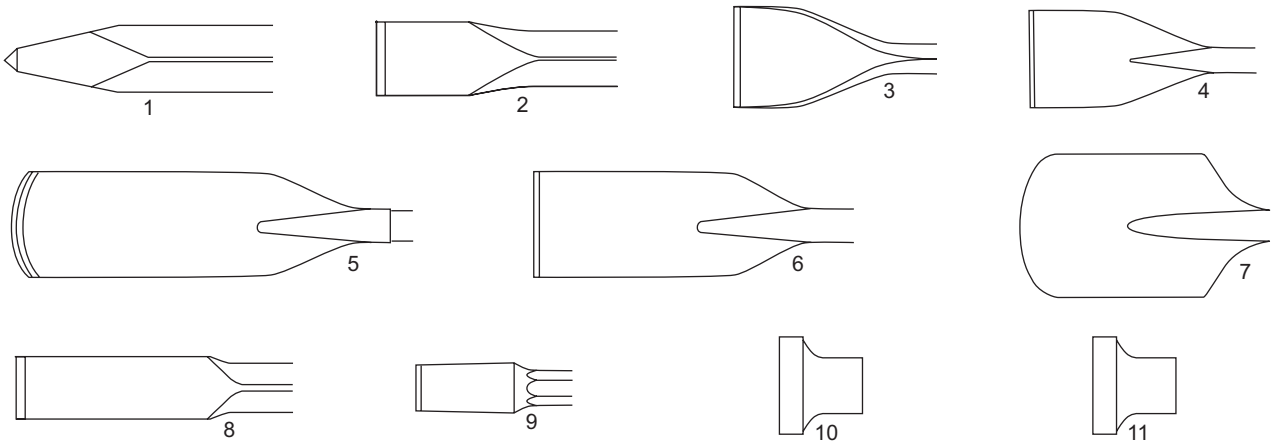
No.		ISO standard 28 x 160 mm 1 1/8" x 6 1/4"				ISO standard 32 x 160 mm 1 1/4" x 6 1/4"				
		W		L		W		L		Ordering No.
		mm	(in.)	mm	(in.)	mm	(in.)	mm	(in.)	Ordering No.
1	Moil point	-		380	(15")	-		380	(15")	3083 3271 00
		-		450	(18")	-		450	(18")	3083 3272 00
		-		1000	(39")	-		1000	(39")	3083 3273 00
2	Narrow chisel	32	(1 1/4")	380	(15")	35	(1 3/8")	380	(15")	3083 3274 00
		32	(1 1/4")	450	(18")	35	(1 3/8")	450	(18")	3083 3275 00
		32	(1 1/4")	1000	(39")	35	(1 3/8")	1000	(39")	3083 3276 00
3	Wide chisel	75	(3")	380	(15")	75	(3")	380	(15")	3083 3277 00
4	Asphalt cutter	115	(4 1/2")	300	(12")	115	(4 1/2")	300	(12")	3083 3278 00
5	Digging chisel	75	(3")	380	(15")	75	(3")	380	(15")	3083 3279 00
6	Digging spade	125	(5")	380	(15")	125	(5")	380	(15")	3083 3280 00
7	Clay spade	140	(5 1/2")	380	(15")	140	(5 1/2")	380	(15")	3083 3281 00
8	Wedge chisel	40	(1 1/2")	400	(16")	40	(1 1/2")	400	(16")	3083 3282 00
9	Shaft for tamping pad	-		230	(9")	-		235	(9 1/4")	3083 3283 01
10	Tamping pad, round	180	(7")	-		180	(7")	-		3083 3301 00
11	Tamping pad, square	150	(6")	-		150	(6")	-		3083 3302 00
		200	(8")	-		200	(8")	-		3083 3197 00





# Working tools, US standard

No.		US standard 1 1/8" x 6" 28 x 152 mm				US standard 1 1/4" x 6" 32 x 152 mm				
		W		L		W		L		Ordering No.
		in.	(mm)	in.	(mm)	in.	(mm)	in.	(mm)	
1	Moil point	-		14"	(350)	-		14"	(350)	3083 3267 00
		-		18"	(450)	-		18"	(450)	3083 4015 10
		-		36"	(915)	-		36"	(915)	3083 4015 30
2	Narrow chisel	1 1/4"	(32)	14"	(350)	1 3/8"	(35)	14"	(350)	3083 3268 00
		1 1/4"	(32)	18"	(450)	1 3/8"	(35)	18"	(450)	3083 4016 10
		1 1/4"	(32)	36"	(915)	1 3/8"	(35)	24"	(610)	3083 4016 30
3	Wide chisel	3"	(75)	15"	(380)	3"	(75)	15"	(380)	3083 3289 00
4	Asphalt cutter	5"	(125)	13"	(330)	5"	(125)	13"	(330)	3083 3290 00
5	Digging chisel	3"	(75)	15"	(380)	3"	(75)	15"	(380)	3083 3291 00
6	Digging spade	5"	(125)	15"	(380)	5"	(125)	15"	(380)	3083 3292 00
7	Clay spade	5 1/2"	(140)	15"	(380)	5 1/2"	(140)	15"	(380)	3083 3293 00
8	Wedge chisel	2"	(50)	16"	(400)	2"	(50)	16"	(400)	3083 3294 00
9	Shaft for tamping pad	-		9"	(230)	-		9"	(230)	3083 3269 00
10	Tamping pad, round	7"	(180)	-		7"	(180)	-		3083 3301 00
11	Tamping pad, square	6"	(150)	-		6"	(150)	-		3083 3302 00
		8"	(200)	-		8"	(200)	-		3083 3197 00



## Claw couplings

Description	Qty	Dimensions	Ordering No.
<b>Claw coupling, complete</b>	1	Standard 3/4"	9000 0306 00
Claw coupling	1		— *)
Seal	1		9000 0000 00
<b>Claw coupling with strainer, complete</b>	1	Standard 3/4"	9000 0306 01
Claw coupling	1		— *)
Strainer	1		9000 0000 10
Seal	1		9000 0000 00
<b>Claw coupling, complete</b>	1	US-universal 3/4"	9001 0005 06
Claw coupling	1		— *)
Seal	1		9001 0005 15

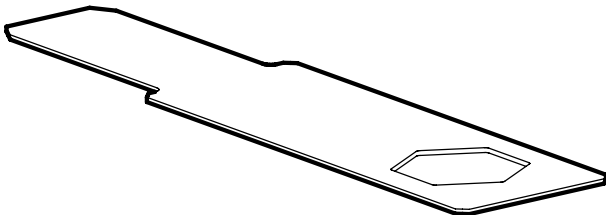
## Air oil

Description	Dimensions	Ordering No.
Air oil bottle 0,2 l	0,2 l	8099 0202 40
Air oil bottle 1 l	1 l	8099 0202 36
Air oil container 5 l	5 l	8099 0202 02
Air oil container 25 l	25 l	8099 0202 20
Air oil barrel 200 l	200 l	8099 0202 28



## Shank gauge

Description	Dimensions	Ordering No.
Gauge, Hex 25	25 mm	3310 1509 25
Gauge, Hex 28	28 mm	3310 1509 28
Gauge, Hex 32	32 mm	3310 1509 32







Any unauthorized use or copying of the contents or any part thereof is prohibited.  
This applies in particular to trademarks, model denominations, part numbers and drawings.

© 2007 Atlas Copco Construction Tools AB, Stockholm, Sweden | No. 9800 0684 01c | 2007-10-04